



HIGHLIGHTS

2025 Highlights at a Glance

Reach and Engagement	<ul style="list-style-type: none"> • 22 social enterprises supported • 8,500+ households benefiting from livelihood and enterprise initiatives • 7,947 families assisted through disaster response • 56 projects approved
Program Investments	<ul style="list-style-type: none"> • P56.4 million for new project approvals • P46.6 million invested in enterprise and community development initiatives • P36.1 million directed toward programs across PEF's focus areas
Livelihood and Value Chain Development	<ul style="list-style-type: none"> • Rice farmers in Nueva Ecija and Camarines Sur increased their yields by 8.5 and 7 metric tons per hectare, respectively, while lowering production costs through improved farming practices. • Coffee farmers in Bukidnon and Sultan Kudarat cultivated a total of 2,566 hectares, benefiting 1,711 farmers. • Fisherfolk in Zamboanga Sibugay consolidated 73 metric tons of oysters expanded market access for their products.
Partnerships and Learning	<ul style="list-style-type: none"> • Stakeholder consultations in focus areas to refine priorities and enable collaboration with partners and development stakeholders. • Launch of the Knowledge and Innovation Challenge for Change (KICK). • Partnership with COAST Facility Philippines to improve coastal livelihood and resource management.
Finance and Organizational Matters	<ul style="list-style-type: none"> • Investment earnings of P132.09 million (ROI: 8.33%) supporting the sustainability of PEF's endowment • Four new members elected to the Board of Trustees • Staff learning sessions on systems thinking and value chain analysis • New policies approved for staff well-being and organizational support • External and internal knowledge sharing through digital platforms

Message from the Executive Director



As the Peace and Equity Foundation approaches its 25th year, we reflect on the partnerships that have shaped our work and enabled us to pursue meaningful development impact across communities.

In 2025, PEF advanced initiatives that support community enterprises, improve livelihoods, and foster collaboration among civil society organizations, government agencies, academic institutions, and development partners. These efforts demonstrate the value of working together to address complex development challenges and expand opportunities for communities.

As we celebrate **Partnerships for Every Family**, we remain committed to working with partners and communities to advance inclusive and sustainable development. Guided by the lessons of the past twenty-five years, we look forward to building on these partnerships as we shape the Foundation's next chapter.

Roberto R. Calingo

Strategic Highlights



For twenty-five years, the Peace and Equity Foundation has partnered with communities, civil society organizations, and development actors to promote inclusive and sustainable development. In 2025, the Foundation continued to grow its impact by improving value chain systems, supporting social enterprises, and fostering collaboration across the development sector.



Across its focus areas, PEF worked with partners and communities to boost productivity, improve value chains, and build stronger organizations. The Foundation also broadened its collaboration with government agencies, academic institutions, private sector partners, and development networks to better align resources and support initiatives that can grow and be sustained over time.



These efforts reflect PEF's continuing role as both a **development institution and a learning platform**, supporting social enterprises and development initiatives while contributing to broader dialogue on effective and sustainable development practice.



Program Highlights



PEF's development initiatives in 2025 focused on growing community enterprises, building the skills and capabilities of partner institutions, and fostering strategic collaborations across its focus areas. Together, these efforts support communities in improving livelihoods, building the skills and capabilities of local organizations, and expanding opportunities for sustainable development.

In 2025, PEF allocated P46.6 million to support 22 partner organizations, benefiting more than 8,500 households engaged in rice, coffee, coconut farming, and aquaculture production.

Additionally, PEF provided relief assistance to 7,947 families affected by Typhoons Crising, Emong, Tino, and Uwan, as well as the earthquake in Cebu and Mindanao.

Enterprise Development

PEF supports community-based enterprises that create more livelihood opportunities while improving local value chains. Across its focus areas, these initiatives helped increase productivity, improve product quality, and open up more market opportunities.

In Nueva Ecija and Camarines Sur, rice farmers adopted improved palay farming practices that increased yields while reducing production costs. In Zamboanga Sibugay, fisherfolk expanded oyster production and improved market access. In Bukidnon and Sultan Kudarat, coffee farmers earned more through improved processing facilities and growing recognition of the quality of their crops.

KEY INITIATIVES INCLUDED:

Value Chain and Enterprise Support

- Enhancing production systems and product quality across rice, coffee, aquaculture, and coconut value chains
- Expanding market opportunities and linkages for community-based enterprises

Technology Development and Transfer

- Adoption of improved palay farming practices in Nueva Ecija
- Testing of localized drip fertigation and rain-shed technologies in Bataan
- Establishment of a solar-powered coffee processing facility in Bukidnon



Institutional Capacity Building

PEF supported partner organizations in improving governance systems, developing leadership skills, and enhancing day-to-day operations to sustain enterprise initiatives and community programs.



Strategic Partnerships

Partnerships continue to be at the heart of PEF's development approach. Working with government agencies, civil society organizations, academic institutions, and private sector partners allows the Foundation to coordinate resources, improve initiatives, and reach more communities with its development programs.



KEY INITIATIVES INCLUDED:

Organizational and enterprise management training

Training programs on branding and product packaging, computerized financial recording, financial management, governance, human resource management, leadership, strategic planning, and values formation

Peer learning and exchange

Learning visits and peer exchanges among partner organizations engaged in palay, coffee, vegetable farming, and aquaculture production, enabling communities to share experiences and build partnerships.

KEY INITIATIVES INCLUDED:

- **Stakeholder consultations in focus areas** to develop 2030 area plans and build collaboration among partner organizations, local governments, and development institutions
- **South Bondoc Peninsula Convergence** exploring coordinated support for sustainable livelihoods and enterprises of agrarian reform cooperatives.
- Participation in the **Bukidnon Coffee Industry Council**, supporting collaboration and implementation of the province's coffee development roadmap
- **Palay Technology Adoption Program** implemented with the Guimba Municipal Agriculture Office, the Philippine Rice Research Institute, and the Central Luzon State University
- Developing coastal resilience in Zamboanga Sibugay in partnership with the **Climate and Ocean Adaptation and Sustainable Transition (COAST) Program Grant Facility**
- Community-building with the **Jesuit Volunteers Philippines Foundation**, deploying volunteers to partner organizations for better management systems and service delivery

CONTINUED ON NEXT PAGE ►

CONTINUED FROM PREVIOUS PAGE ►



Learning and Knowledge Exchange

PEF promotes learning and dialogue that contribute to stronger development practice. Through learning forums, knowledge platforms, and sector engagements, the Foundation facilitates and participates in the exchange of ideas, experiences, and innovations among practitioners, policymakers, and development partners.



- **Strategic collaborations** with **ZEP2030, Project TRANSFORM, and MinREACH**, contributing to broader efforts addressing poverty reduction, climate resilience, and renewable energy for development

Together, these initiatives grow enterprises, reinforce partner institutions, and expand collaborative efforts that support more resilient livelihoods in partner communities.

KEY LEARNING INITIATIVES IN 2025 INCLUDED:

- **Knowledge and Innovation Challenge for Change (KICK)** A nationwide platform encouraging practitioners, organizations, and emerging leaders to share innovative solutions addressing social and environmental challenges
- **#ClimateReady: Innovations for Resilient Communities** A learning event highlighting practical approaches to climate-resilient livelihoods and community adaptation strategies
- **Future-proofing Philippine Coffee** A dialogue among stakeholders on increasing productivity, improving quality, and enhancing competitiveness in the Philippine coffee industry
- **From Survival to Scale: Sustaining Farmers' Organizations in the Value Chain** A learning session exploring how farmers' organizations can enhance their role in agricultural value chains and scale enterprise initiatives
- **Aquaculture Stakeholders Forum** A sector dialogue among practitioners and community leaders to discuss opportunities for boosting aquaculture livelihoods and coastal resource management
- **Public Forum on the Islamic Financing Landscape Report** A discussion on opportunities for expanding Shariah-compliant financing mechanisms to support inclusive development and enterprise growth
- **Participation in the Social Enterprise World Forum** Engagement with global networks and emerging practices in social enterprise development

Through these initiatives, PEF continues to be a platform for learning and collaboration within the development ecosystem.

Institutional Highlights

Finance and Investments

PEF maintained a balanced approach between program investments, financial stewardship, and prudent asset management to support the sustainability of its programs and the long-term growth of its endowment.

Sustained development impact requires strong and responsive institutions. PEF continues to strengthen financial management, organizational agility, learning, staff development, and governance systems that support effective program implementation and responsible stewardship of resources.

KEY INITIATIVES INCLUDED:

- Investments yielded an ROI of 8.33% contributing to the sustainability of the Foundation's endowment and support program operations.
- Program and project disbursements supporting community development and enterprise initiatives
- Resource mobilization and co-financing arrangements with development partners
- Financial governance and oversight mechanisms that enhance accountability and transparency

The total fund balances have increased to **P2.28 billion**, reflecting a growth of **P63.09 million**. The increase was attributed to several key factors, as detailed below:

- Net investment income (including income from partners and other income): P132.09 million
 - Unrealized gains on the market prices of common stocks: P12.27 million
 - Fair value gains on investment properties: P13.24 million
 - Net unrealized gains from capital appreciation of real estate property, adjusted for tax effects, remeasurement of defined benefit plan, and changes in fair value of investments: P1.05 million
 - Foreign exchange gains: P17.61 million
- As part of our ongoing operations to support our mission, the following expenditures were incurred:
- **Grants to partners, projects, and operating expenses:** P104.65 million
 - **Fund managers' fees and other charges:** P4.22 million.
 - **Provision for taxes:** P3.67 million
 - **Provision for bad debts:** P1.48 million

Inflation Provision and Fund Value Maintenance

The Foundation continued to accrue in advance the **2026 inflation provision** set at **2%**, resulting in a cumulative provision of **P844.56 million**. This provision is intended to preserve the value of the original **endowment fund** of **P1.318 billion**, which was established in 2001. It is also designed to serve as a financial buffer during periods of economic uncertainty and to support PEF programs and operations.

As of **December 31, 2025**, the **Unrestricted Fund Balance** stood at **P119.56 million**.

SUMMARY OF SOURCES OF FUNDS AND DISBURSEMENTS

The Foundation's programs and operations were financed through the following sources:

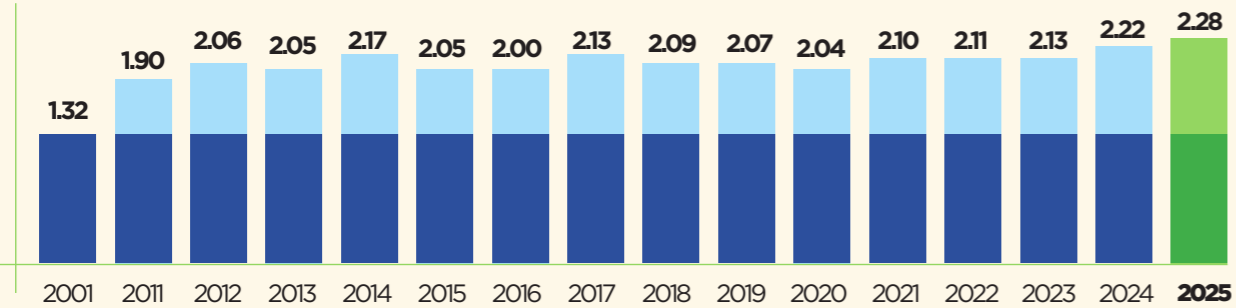
- **Net realized income** from investments in various financial instruments (stocks and bonds): **P119.93 million**
- **Project reflows** in the form of principal payments and interest on loans received from partner organizations: **P57.49 million**.

A total of **P139.50 million** was disbursed for the following purposes:

- **Investments to partners (project loans):** P38.25 million
- **Grants extended to social enterprises (SE) and other general development programs:** P41.97 million
- **Project development, capacity building, technical assistance, monitoring, and evaluation:** P30.71 million
- **Knowledge management:** P9.94 million
- **Other institutional expenses:** P2.44 million
- **General and administrative expenses:** P16.19 million

Total Fund Balance 2011-2025

IN BILLION PESOS

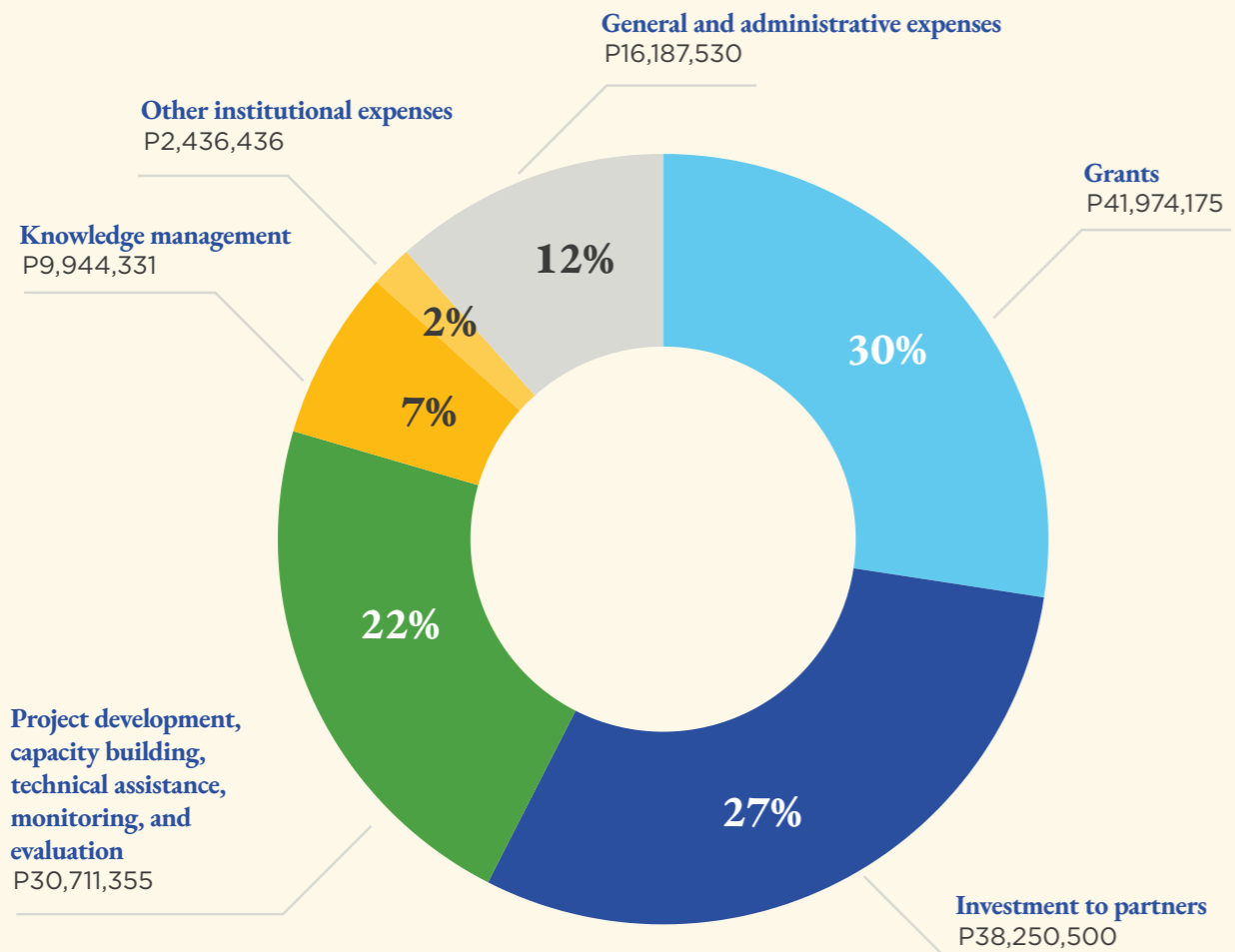


Institutional Highlights

Program Highlights

Strategic Highlights

Disbursements for the year 2025



Organizational Agility and Learning

PEF continued to invest in staff development, improve internal systems, and enhance organizational learning to ensure programs are implemented effectively.

KEY INITIATIVES INCLUDED:

- Staff learning sessions on **systems thinking, SCALE-up strategy, social rate of return, salient features of Sagip-Saka Act, and Palay Floor Price implementation**
- **Bridging leadership training** for senior managers
- **Wellness sessions** supporting staff health and well-being
- Approval of new policies on **occupational safety and health, retirement, service contracting, and internship programs**
- Initial work translating PEF's strategic directions into an **institutional monitoring and evaluation results framework** aligned with the Foundation's Results-Based Management approach
- **After-action reviews and staff reflection sessions** to capture lessons from program implementation

Strategic Highlights

Program Highlights

Institutional Highlights

Knowledge Sharing and Communications

PEF advanced knowledge sharing and communications to support learning and engagement with stakeholders.



KEY INITIATIVES INCLUDED:

- Expanded digital engagement through the **PEF website and social media platforms**, increasing the visibility of the Foundation’s programs, partnerships, and development initiatives
- Release of key institutional publications, including the **2024 Performance Highlights, 2024 Annual Report**, and **quarterly newsletters** distributed to members of the Foundation’s network
- **News articles and radio features** highlighting PEF initiatives, generating significant media value and expanding public awareness of the Foundation’s work
- Continued internal knowledge sharing through **Dexter’s Hub**, the staff community platform

Governance

PEF continued developing governance oversight and institutional systems.



KEY INITIATIVES INCLUDED:

- Election of **four new members to the PEF Board of Trustees** representing national and regional NGO networks and coalitions: Austere Panadero, Rev. Fr. Antonio Cecilio Pascual, Caroline Manguiat-Ubalde, and Edith Villanueva
- **Board visit to project areas in Guimba, Nueva Ecija**, engaging with partner organizations and rice farming initiatives
- An **independent IT** audit providing recommendations to ensure business continuity and enhance digital systems

Launching PEF@25: Partnerships for Every Family

In 2026, the Peace and Equity Foundation marks its **25th anniversary**, celebrating decades of partnership with communities and development institutions across the Philippines.

The anniversary campaign was launched on **November 26, 2025 at Gallery MiraNila**, bringing together civil society leaders, young entrepreneurs, and social enterprise practitioners.

The program featured talks by **Prof. Julio Teehankee, Christine De Siree Jodloman, and PEF founder Dan Songco**, followed by a panel discussion

exploring key issues facing civil society today, including governance challenges, climate change, and leadership renewal.

The event also launched the **Knowledge and Innovation Challenge for Change (KICK)**, a nationwide platform designed to surface innovative ideas that can enable sustainability and impact in development work.

The anniversary campaign will culminate in **November 2026** with activities celebrating PEF’s partnerships and exploring new directions for advancing the Foundation’s mission.



2025 Partnership Projects

Social Enterprises P 46,670,700

Enterprise Development

Bataan - P 1,281,500

San Simon Farmers Association

Rice production
P561,500

Tucop Farmers Association

Onion production and technology demonstration
P720,000

Bukidnon - P 12,614,000

Bayanihan Millennium Multipurpose Cooperative

Coffee trading
P 7,000,000
Coffee demonstration farm
P 500,000
Partners meeting
P 200,000

Impalutao Dalwangan Sawaga Agrarian Reform Cooperative

Coffee consolidation and marketing
P 1,000,000
Coffee production
P 500,000

Kauyagan Savers Multipurpose Cooperative

Coffee consolidation
P 3,414,000

Nueva Ecija - P 985,000

Cooperative Enterprise for True Economic Reform Primary Multipurpose Cooperative

Rice farming technology adoption
P 985,000

Quezon - P 5,194,000

Greenlife Coconut Products

Coconut processing and marketing
P 2,000,000

One Renewable Energy Enterprise

Productive Use of Renewable Energy
P 2,000,000

Quezon Federation and Union of Cooperatives

Organizational assessment and capacity-building
P 884,000

Sta. Rita Agriculture Cooperative

Coconut and copra warehouse improvements
P 310,000

Sultan Kudarat - P 1,073,000

Bacbacan Multipurpose Cooperative

Coffee demonstration farm
P 386,000
Strategic planning
P 50,000

Kalamansig Farmers Agricultural Development and Marketing Association

Coffee demonstration farm
P 291,000

Keytodac Coffee Growers, Inc.

Coffee demonstration farm
P 346,000

Camarines Sur

Oragon Farmers Agriculture Cooperative

Rice Processing center expansion
P 15,000,000



Other areas

Nueva Vizcaya

Organic vegetable marketing
P 5,000,000

Surigao del Norte

School for Experimental and Entrepreneurial Development, Inc.

Vegetable production
P 1,000,000

Institution Building

Almacen Fishermen Cooperative

Kapunungan sa Gagmay'ng Mangingisda Fishermen Cooperative

Yakap at Halik Multipurpose Cooperative Quezon 2

Aquaculture Stakeholders Forum
P 973,000

Bacbacan Multipurpose Cooperative, Kalamansig Farmers Agricultural Development and Marketing Association, Keytodac Coffee Growers Agriculture Cooperative

Learning visit on coffee practices in Bukidnon
P 417,200

Cooperative Enterprise for True Economic Reform Primary Multipurpose Cooperative

Oragon Farmers Agriculture Cooperative

Rice Learning visit in Piddig, Ilocos Norte
P 200,000

Jesuit Volunteers Philippines Foundation, Inc.

Volunteer program for partner organizations
P 1,200,000

Kabuhayan sa Ganap na Kasarinlan Credit and Savings Cooperative

Succession planning and mentorship session
P 150,000

National Confederation of Cooperatives

Agri-cooperative training module development and pilot-testing
P 874,000

Bacbacan Multipurpose Cooperative, Kalamansig Farmers Agricultural Development and Marketing Association, Keytodac Coffee Growers Agriculture Cooperative, Bayanihan Millennium Multipurpose Cooperative, Impalutao Dalwangan Sawaga Agrarian Reform Cooperative, Kauyagan Savers Multipurpose Cooperative

Philippine Coffee Expo
P 709,000

Disaster Risk Reduction, Relief, And Rehabilitation P 4,900,600

Sultan Kudarat

Mindanao Flooding Relief Operations

Bacbacan Multipurpose Cooperative
P 200,000

Typhoon Crising and Emong

Bulacan

Kabuhayan sa Ganap na Kasarinlan Credit and Savings Cooperative
P 250,000

Tanging Yaman Foundation
P 180,000

Metro Manila

Caritas Kalookan, Inc.
P 250,000

North Cebu Earthquake Response

Cebu

Vivant Foundation, Inc.
P 212,500

Philippine Disaster Resilience Foundation
P 252,500

Typhoon Opong Relief Operations

Masbate

Coalition for Bicol Development
P 300,000

Caritas Masbate
P 300,000

Typhoon Tino Relief Operations

Cebu

Pagtambayayong Foundation
P 435,600

Palawan

Palawan Center for Appropriate Rural Technology
P 200,000

Negros Occidental

Negrense Volunteers for Change
P 520,000

Center for Emergency Aid, Rehabilitation and Development
P 250,000

KAISAHAN Inc.
P 250,000

Typhoon Uwan Relief Operations

Camarines Sur

Caritas Diocese of Libmanan, Inc.
P 250,000

Catanduanes

Caritas Virac for Justice and Peace Inc.
P 300,000

Kalinga

Philippine Society of the Divine Word Alumni Association
P 250,000

Mindanao Earthquake Relief Operations

Davao del Sur

Kasilak Development Foundation
P 500,000

General Development Support P 4,884,000

Pambansang Kilusan ng mga Samahang Magsasaka

Integrated Diversified Organic Family Farming System Training
P 1,000,000

Shontoug Foundation

Organic Farming Training
P 500,000

Association of Foundations

53rd General Assembly
P 100,000
ZEP 2030 Secretariat and local convergence activities
P 2,000,000

Barista and Coffee Academy of Asia, Inc.

Philippine Coffee Quality Competition 2025
P 364,000

The Institute for Social Entrepreneurship in Asia

National Social Enterprise Conference 2025
P 50,000

Maximus Prime Consultancy and Management Services

CSO and CSR advocacy radio program support
P 300,000

National Union of Cooperatives

National Cooperative Summit 2025
P 50,000

Philippine Coffee Board Inc.

1st Philippine Coffee Sustainability Congress
P 100,000

Kauyagan Savers Multipurpose Cooperative

Social Enterprise World Forum Participation
P 70,000

Ramon Magsaysay Awards Foundation

2025 Ramon Magsaysay Lecture Series
P 250,000

National Confederation of Cooperatives

Yes to Agri-youth in Cooperatives Summit 2025
P 100,000

Types of Projects			Project Funding Per Region	
Types	Support		Region	Amount
Social Enterprises	46,670,700	82%	Luzon	25,590,500 45%
Disaster Risk Reduction, Relief, And Rehabilitation	4,900,600	9%	Visayas	1,920,600 4%
General Development Support	4,884,000	9%	Mindanao	16,874,200 30%
			Multiple areas	12,070,000 21%

Board of Trustees



Most Rev. Antonio J. Ledesma, SJ DD
CHAIRPERSON



Edith Y. Villanueva
VICE CHAIRPERSON



Emmanuel S. De Dios
TREASURER



Martiniano L. Magdolot
TRUSTEE



Austere A. Panadero
TRUSTEE



Rev. Fr. Antonio Cecilio T. Pascual
TRUSTEE



Ma. Gisela H. Tiongson
TRUSTEE



Caroline M. Ubalde
TRUSTEE



Eloize Juliet G. Victoriano
TRUSTEE



Roberto R. Calingo
EX-OFFICIO



Atty. Ana Lea H. Uy
CORPORATE SECRETARY AND LEGAL COUNSEL

Management & Staff

EXECUTIVE OFFICE

Roberto R. Calingo
Executive Director

Margeaux M. Martinez
Executive Assistant

KNOWLEDGE MANAGEMENT

Maria Pia V. Villapando
Manager

Danica Marra M. Soliman
Senior Knowledge Management, Monitoring & Evaluation Officer

Aljan G. Quilates
Communications Officer

Donie R. Rafael
Information and Communication Technology Officer

INTERNAL AUDIT

Eureka D. Pesigan
Internal Audit Officer

OPERATIONS

Cauchie C. Garcia
Deputy Executive Director

Joan Cris D. Lazaro
Operations Assistant

Dario C. Medallo
Sr. Credit Specialist

LUZON & VISAYAS
Peter Floriño C. Nabong
Area Manager

Anthony E. Lazo
Alfred John M. Escaño
Carmela Anne P. Nequinto
Area Officers

MINDANAO

Nikki M. Along
Area Manager

Shunie Pearl D. Palacios
Redentor Adrian F. Aquino
Area Officers

PROGRAMS

Laurinette Alice A. Gonzalez
Senior Program Officer

Anthony Francis B. Malabanan
Program Officer for Institution Building

Gian Zechariah Siapo
Program Officer for Collaboration

MANAGEMENT SERVICES

Maria Lourdes G. Arroyo
Manager

FINANCE

Ma. Lucita P. Satiembre
Finance Officer

Cleaufe Linda F. Bautista
Sr. Finance Specialist

HUMAN RESOURCES

Eleanor P. Dimaliwat
Human Resource Officer

GENERAL SERVICES

Joan Quennie B. Baldoz
Administrative Assistant

Looking Ahead: PEF's Next Chapter

As development challenges evolve, PEF remains committed to partnerships, innovative approaches, and building institutions that support inclusive and sustainable development.

Guided by lessons from the past twenty-five years and inspired by the partnerships that shaped its work, the Foundation looks ahead to working

with communities, partners, and development leaders to expand opportunities, improve livelihoods, and create lasting impact.

Together with its partners, PEF will build on twenty-five years of collaboration to help shape a more inclusive and resilient future for communities across the Philippines.

At a Glance: 2030 Vision



Expand impact areas from six (6) to 16, covering Luzon, Visayas, and Mindanao



Increase household beneficiaries from 5,026 to 36,600



Support 156 organizations, including 37 social enterprises and 119 people's organizations (from 14 and 17, respectively)



Grow annual social enterprise gross sales to P2.8 billion



Establish 58 strategic partnerships — 40 at the local level and 18 at the national level

In response to the needs of its partner communities and stakeholders, PEF advanced its social enterprise strategy by scaling models, replicating proven solutions, and deepening collaboration with key stakeholders to achieve lasting impact.

By 2030, PEF aims to achieve the following:



Peace & Equity Foundation

69 Esteban Abada Street
Loyola Heights 1108
Quezon City, Philippines
T: (+632) 8426 8402

ask@pef.ph

[f](#) [@](#) [peaceandequityfoundation](https://www.facebook.com/peaceandequityfoundation)